



RSSB

REVOLUTIONIZE RAIL SOLUTION

◆ ...

COMPANY
PROFILE

>>>

www.railsssb.com

>>>



CONTENTS

01

About Company

Story of our company and our focus in our business

02

Core Value

We are trusted and have professional local expert

03

Company SSM

Our company registered since August 2023

04

Our Services

We've provided multiple services & Consultation such as RAM & safety consultants, Asset Management, Technical Advisor, RAMS, CRE & CMRP training in railway Application

05

Our Projects

We are trusted by more than 500 clients

About Company

Rail Systematic Solution Sdn Bhd (RSSB) is a business endeavour delivering high quality specialized system engineering deliverables. The company is predominantly doing business for, Urban and Suburban National Rail System projects.

Our management team is based in Malaysia, providing cost-effective high-quality local experts services combines systems engineering tools and assurance processes with people and technology to create structured design and delivery processes that provide sustainable solutions, ensuring overall capabilities satisfy client needs.



We apply smart analytical techniques and engineering safety management methods to examine factors that may influence Reliability, Availability, Maintainability, And Safety (RAMS) aspects of systems. The fact that provides RSSB with an edge is that we have a team of highly experienced professionals from the field of RAMS, System Engineering & System Assurance. We also focus on the Research and Development as well as training provider.

About Company

Rail Systematic Solution Sdn Bhd [202301033286 (1527209-T)] established in 2023, is an engineering consultancy company specialising in providing consultancy services and training in the field of System Engineering, Requirement Management, Cybersecurity, Electromagnetic Compatibility (EMC/EMI) and System Assurance which consist of Reliability, Availability, Maintainability (RAM), Safety, Fire Safety Management, Human Factor, Ergonomics and etc. RSSB has a legacy of delivering System assurance projects in Malaysia such Mass Rapid System (MRT 2), Southern Double Track, Light Rapid Transit (LRT 3), Automated People Mover (APM) **KL International Airport Rapid Transit System (RTS) and Kuching Urban Transit System (KUTS), Southern Double Track, LRT3, APM KLIA and RTS. Delivery of these sophisticated projects has helped RSSB to develop expertise and knowledge base in System engineering, RAMS, and Assurance techniques. Further RSSB has developed a string of client base.**

The primary objective of **RSSB Consultancy** is to catalyse project delivery and world-class system performance by assisting projects with expertise in System engineering, Safety and RAM. We at RSSB apply innovative, analytical RAMS techniques and assurance methods to identify and mitigate risks that may influence safety, reliability, and performance of a system.

Vision

To enhance the life cycle of railway projects and services, we aim to offer intelligent web tools that optimize efficiency. Our focus is on cultivating expertise in System Assurance Management, System Engineering, Requirement Management, and Risk Management through our consulting services and accredited training programs. We are dedicated to delivering cost-effective and timely services with a commitment to world-class quality.

Mission

- To develop System Engineering & System Assurance resources worldwide and deliver high standard system engineering consulting services in railway projects.
- To emphasize on project characterization doing the appropriate level of system techniques appropriate to the need of the projects.
- To design appropriate level of System Assurance consistent with project characterization.
- To minimize the project risk as well as the railway performance risk by System Engineering techniques.

About Company

Our dedicated team provides the full spectrum for domains Railways

SYSTEM ENGINEERING

SYSTEM ASSURANCE

RAM MANAGEMENT

SAFETY MANAGEMENT

EMC/EMI

CYBERSECURITY

FIRE SAFETY MANAGEMENT

LIFE CYCLE COST

REQUIREMENT MANAGEMENT

VERIFICATION & VALIDATION

RAIL SYSTEMATIC SOLUTION SDN BHD

www.railsssb.com



**RESPONSIBILITY TO THE
COMMITTEE AND SOCIETY**

LOCAL TALENT

TECHNICAL EXCELLENCE

Our Core Value

CUSTOMER SATISFACTION

PROFESSIONAL ETHICS

CUSTOMER LOYALTY

**ORGANIZATIONAL &
INDIVIDUAL GROWTH**

Meet Our Team



AFIQ ZAMBRI Managing Director

As the Managing Director of RSSB, Afiq Zambri brings a wealth of expertise as a qualified professional in Quality Assurance, OSHA, and RAMS. With a proven track record, he directs the entire spectrum of activities and projects undertaken by the RSSB team. Afiq's distinguished career spans 15 years, with a focus on railway RAM and System Safety in both Malaysia and regional contexts. His leadership extends to working seamlessly on both contractor and client fronts, ensuring the successful delivery of System Assurance for rail projects. Moreover, Afiq excels in the establishment of Reliability-Centered Maintenance and the implementation of strategic asset management, underscoring his commitment to elevating the company profile through unparalleled proficiency and dedication.

HIDAYAH MOHAMAD Operational Director

Hidayah Mohamad, with a robust academic background and extensive work experience in the realm of System Assurance, holds a Master's degree in Engineering and is currently pursuing a Doctorate in Railway Engineering. Her research focuses on the application of RAM techniques for industrial case studies. With over 5 years of expertise in System Assurance, specializing in RAMS, Verification and Validation. Hidayah Mohamad is also certified and highly competent in Functional Safety within the Railway domain. Currently serving as the Operational Director for RSSB, her expertise contributes significantly to the effective functioning and success of the organization.



Company SSM

 SURUHANJAYA SYARIKAT MALAYSIA COMPANIES COMMISSION OF MALAYSIA	
COMPANIES ACT 2016 (ACT 777)	
CERTIFICATE OF INCORPORATION OF PRIVATE COMPANY	
This is to certify that	
RAIL SYSTEMATIC SOLUTION SDN. BHD. 202301033286 (1527209-T)	
is, on and from the 24 th day of August 2023, incorporated under the Companies Act 2016, and that the company is a company limited by shares and that the company is a private company.	
Dated at KUALA LUMPUR this 29 th day of August 2023.	
 DATUK NOR AZIMAH ABDUL AZIZ REGISTRAR OF COMPANIES MALAYSIA	
	
User Id: izzuddin2	Date: Tue Aug 29 17:37:32 2023
This certificate is generated from MYDATA SSM Services as at 29/08/2023 17:37:32	
MENARA SSM@SENTRAL, NO 7, JALAN STESEN SENTRAL 5, KUALA LUMPUR SENTRAL, 50470 KUALA LUMPUR.	
Printing Date: 29/08/2023	
1 / 1	

Our Services

01

CONSULTATION

Railssb offers customers technical guidance and comprehensive project management solutions tailored to meet their specific needs and expectations.

02

TRAINING & TECHNICAL ADVISOR

RSSB provides technical courses that are designed to inline with legislation and best industry practices

03

RESEARCH & DEVELOPMENT

Railssb offer a complete 7 engineering, procurement and construction company to accommodate local and global markets. Our global is to provide services that meet quality, safety and on time delivery to customer.

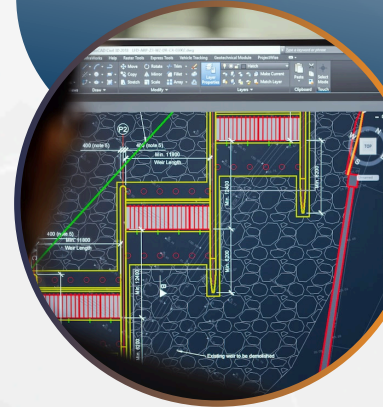
Our Services

CONSULTATION

1. SYSTEM ENGINEERING

Systems Engineering provides facilitation, guidance, and leadership to integrate the relevant disciplines and specialty groups into a cohesive effort, forming an appropriately structured development process that proceeds from concept to production, operation, evolution, and eventual disposal.

Systems Engineering considers both the business and the technical needs of customers to provide a quality solution that meets the needs of users and other stakeholders, is fit for the intended purpose in real-world operation, and avoids or minimizes adverse unintended consequences.



2. SYSTEM ASSURANCE

System Assurance (SA) is the process a project shall adhere to ensure that its goals are delivered safely and reliably as well as meet its objectives. This involves assuring the products and the systems used as well as assuring the process followed in the system development.

SA is the planned and systematic set of engineering activities necessary to assure that products conform with all applicable system requirements for safety, security, reliability, availability, maintainability, standards, procedures, and regulations, to provide the user with acceptable confidence that the system behaves as intended in the expected operational context.



3. RAM MANAGEMENT

Reliability, Availability, and Maintainability (RAM) management activities are pivotal in enhancing railway operations, focusing on optimizing performance, reducing costs, and improving safety and customer satisfaction. Reliability management ensures the consistent performance of railway components, utilizing predictive maintenance and performance monitoring. Availability management always keeps the railway system operational through efficient scheduling and rapid repairs. Maintainability management involves designing and maintaining assets for easy and cost-effective upkeep, incorporating standardized parts and effective staff training. Our service provides RAM activities such gathering of RAM Data from operation or factories, RAM analysis, FMECA Analysis and how to strategies ensure that railway services are dependable, consistently available, and easily maintained, crucial for maintaining competitive advantage in the transportation sector.



4. SAFETY MANAGEMENT

Safety Management is the process a project shall adhere to ensure that its goals are delivered safety as well as meet safety objectives. This involve assuring the products and the systems used as well as assuring the process followed in the system development.

Our service provides Safety activities such gathering of Hazard Management, Quantitative and Qualitative Risk Analysis, Fault Tree Analysis, Safety Case, Fire Safety Management to ensure that railway services are safe.



Our Services

CONSULTATION

5. EMC AND EMI

Electromagnetic compatibility (EMC) analysis is performed to ensure that electrical and electronic items present in a system comply with the norms specified by various governmental, commercial, and international policies with respect to the radio frequencies emitted. It is also done to ensure that these items can perform in their intended electromagnetic environment.

Our teams carry out EMC analysis to ensure compatibility, conformance as well as non-interference with other signals there by providing assurance of maximum performance and user safety.



6. CYBERSECURITY

Cybersecurity practices in railways include robust risk management strategies, the implementation of preventive tools like firewalls and encryption, and rigorous monitoring to detect and respond to threats promptly. Compliance with evolving national and international Cybersecurity standards is also critical to maintain an effective defence against the continuously advancing threat landscape.

Our team carry out Operational technology (OT) and information technology (IT) security risk assessment to protect devices, networks, systems, and users to help organizations keep sensitive data safe, ensure users connect to the internet securely, and detect and prevent potential cyberattacks.



7. FIRE SAFETY MANAGEMENT

Electromagnetic compatibility (EMC) analysis is performed to ensure that electrical and electronic items present in a system comply with the norms specified by various governmental, commercial, and international policies with respect to the radio frequencies emitted. It is also done to ensure that these items can perform in their intended electromagnetic environment.

Our teams carry out EMC analysis to ensure compatibility, conformance as well as non-interference with other signals there by providing assurance of maximum performance and user safety.



8. HUMAN FACTOR AND ERGONOMICS

Human Factors Engineering and Ergonomics (HF & E) deal with designing systems, products and processes taking into consideration the human interaction between them and the users. Human Factor specialist is responsible for the "people part" in the design of complex systems. Human Factors assessments ensure that the designs of complex systems are optimized for their users and minimize the potential for human error.



Our Services

CONSULTATION

9. LIFE CYCLE COST

LCC analysis in the railway industry is a vital tool that evaluates the total cost of railway assets from acquisition through to disposal. This methodical approach involves defining the specific scope and objectives of the analysis, followed by identifying and estimating various cost components such as initial capital investment, installation, operations, routine maintenance, major overhauls, upgrades, and eventual decommissioning costs. By gathering precise data, applying discounting techniques to account for the time value of money, and performing sensitivity analysis on key variables, the LCC helps railway decision-makers understand the financial implications of asset choices over their entire lifespan.



10. REQUIREMENT MANAGEMENT

Requirement management involves the process of engaging with the client to understand the requirements of the proposed project in detail, clarifying the same and offering suggestions based on the experience we have gained from engaging in various projects across the globe to ensure that the outcome meets the requirements of all the stake holders involved in a realistic manner making it economically and technically viable.

This involves analysing and eliciting the requirements, documenting them ensuring trace-ability, prioritizing them, reaching an agreement with all the stakeholders, and thereafter managing change efficiently.



11. VERIFICATION & VALIDATION

Verification and Validation (V&V) is the process through which it is demonstrated that the system in its design phase and while rolling out has met all the requirements and it meets its intended purpose. V&V activities are carried out on an on-going basis until completion and are reported on at key stages of the project lifecycle. V&V activities support System Assurance and provide evidence for the cases for safety, as well as providing evidence to stakeholders to demonstrate their needs have been met. Validation is the process to confirm that the system built or to be built meets the stated needs of the stakeholders. It is to check whether the system will do whatever it is intended to do and at the same time will not do what it is not supposed to do. RSSB, from the client side or as an independent third party, helps to ensure that 'you built the right thing' by validating the designs, prototypes, final system elements, training materials etc.



Our Services

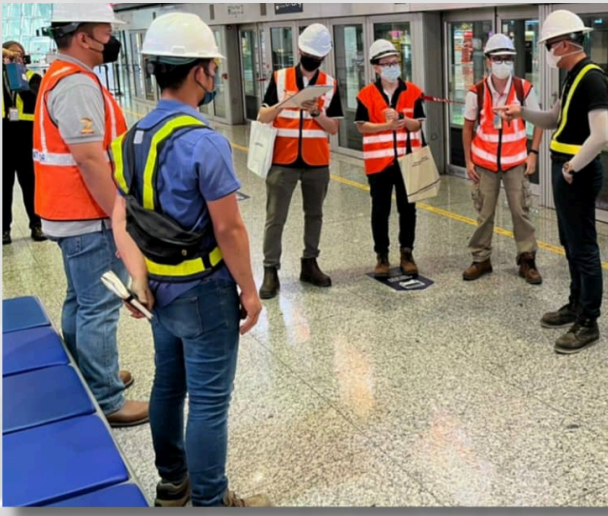
TRAINING



RAMS TRAINING



SAFETY TRAINING



FMEA, FTA, ETA



SAFETY ANALYSIS

RAIL SYSTEMATIC SOLUTION SDN BHD

www.railsssb.com

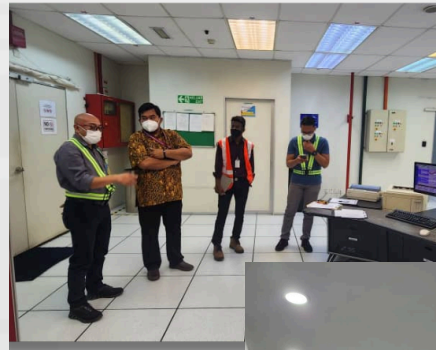


Our Services

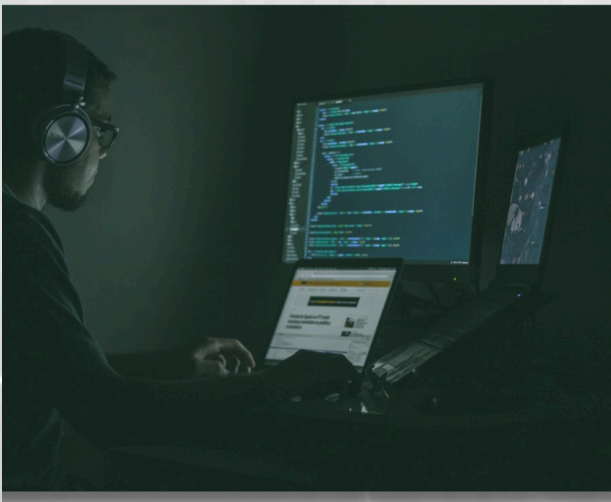
RESEARCH & DEVELOPMENT



RAMS METHODOLOGIES



SAFETY ASSESSMENT & ANALYSIS



CYBERSECURITY

RAIL SYSTEMATIC SOLUTION SDN BHD

www.railsssb.com



Our Project



RAIL SYSTEMATIC SOLUTION SDN BHD

www.railsssb.com



Our Project



RAIL SYSTEMATIC SOLUTION SDN BHD

www.railsssb.com



Contact Us

We are ready to help you next. Contact us for consultation. We will give our best. Our staff consists of professionals and has a high level of experience.



CONTACT US!



www.railsssb.com



admin@railsssb.com



+603 - 5038 7216
+6011 - 2139 3844



No.23-1, Jln Sg Burung Z 32/Z,
Bukit Rimau,
Shah Alam 40460, Selangor

RAIL SYSTEMATIC SOLUTION SDN BHD

www.railsssb.com



REVOLUTIONIZE RAIL SOLUTION

"High quality builds trust with your customers, which, in turn, makes you competitive in the market. It saves costs and fixes issues before problems become larger and it helps to set and maintain quality standards by preventing problems to begin with."



RSSB

REVOLUTIONIZE RAIL SOLUTION

RAIL SYSTEMATIC SOLUTION SDN BHD
www.railsssb.com

